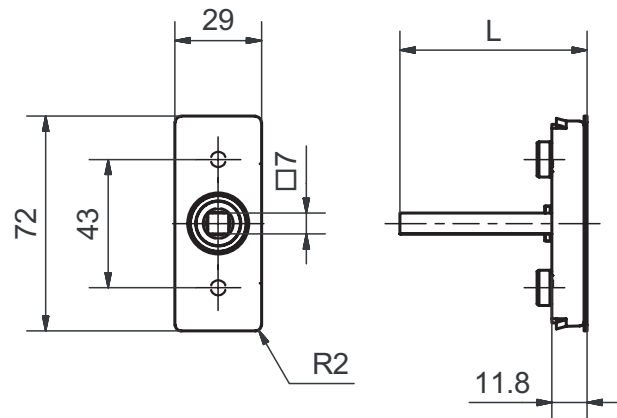


## 51102 DF

### Spindle rose flush



#### Standard version

Satin stainless steel  
 4 x 90° ball stop  
 Left / right applicable  
 Square spindle 7 x 38 mm  
 72 x 29 x 12 mm  
 Fixing centres 43 mm  
 Studs Ø 9,5 / 12 mm  
 Suitable for all tilt and turn systems  
 Without cover

#### Options

Polished stainless steel  
 RAL lacquered  
 PVD lacquered  
 Length: of square spindle 7 x 24, 32, 35, 40 mm (other spindle  
 Lengths: upon request)