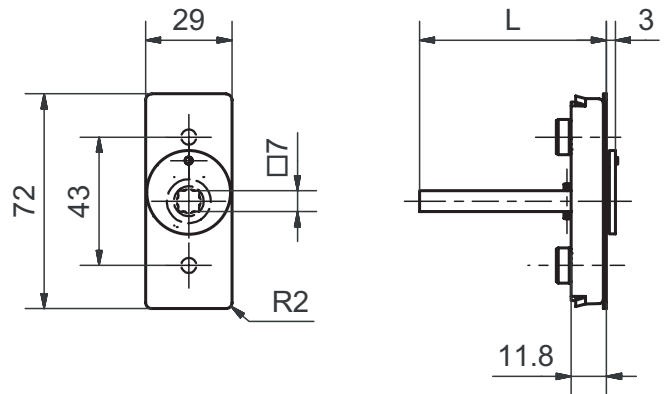


51102 DFV

Spindle rose flush with cover



Standard version

Satin stainless steel
 4 x 90° ball stop
 Left / right applicable
 Square spindle 7 x 38 mm
 72 x 29 x 12 mm
 Fixing centres 43 mm
 Studs Ø 9,5 / 12 mm
 Suitable for all tilt and turn systems
 With cover

Options

Polished stainless steel
 RAL lacquered
 PVD lacquered
 Length: of square spindle 7 x 24, 32, 35, 40 mm (other spindle
 Lengths: upon request)