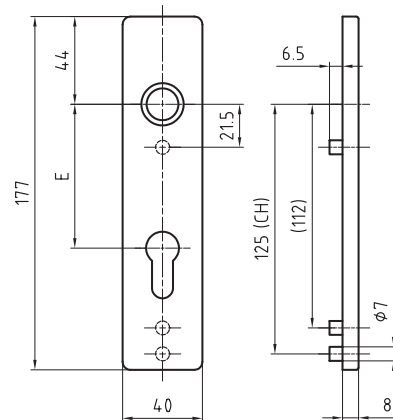


5349C

Stainless steel short plate to clips



Standard version

Length: 177 mm

Width: 40 mm

Projection: 8 mm

Satin stainless steel

16 mm guide: Glutz glide inwards

Base plate on one side with guided cam CN

Base plate on one side with threaded cam M4 CG

Fixing centres 125 mm

Polished stainless steel

RAL lacquered

PVD lacquered

16 mm twin, semi-outside

16 mm twin, outside

Glutz easyfix

Knob fixing

Fixing centres 112 mm

Cutout

5349.00C blind

5349.0C blank

5349.1C BB E = 72 mm, 78 mm

5349.2CRZ E = 74 mm, 78 mm

5349.3CPZ E = 72 mm, 78 mm

5349.4C WC E = 78 mm

Cutouts for lever handles:

.19 for lever handles \varnothing 18 mm

.21 for lever handles \varnothing 20 mm

.23 for lever handles \varnothing 22 mm

Options