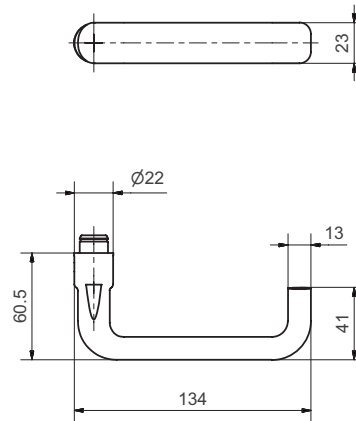


## 50040 Mercury Stainless steel lever handle



Picture shows handle with 5620C rose

### Product profile

Commercial buildings, administrative centres and superior quality residential developments

### Standard version

Lever handle Length: 134 mm, Ø 22 mm  
Projection: 61 mm  
Square spindle 9 mm  
Solid satin stainless steel  
16 mm guide for Glutz glide / easyfix

### Options

Polished stainless steel  
RAL lacquered  
PVD lacquered  
Square spindle 8 mm or 8,5 mm  
16 mm guide for Glutz twin glide  
Category of use class 3, EN 1906: 2002-05

### Standards

Category of use class 4, EN 1906: 2002-05  
Tested for use in fire-rated and smoke protection doors to DIN 18273: 1997 - 12  
Admitted, combined with the appropriate lock as lever handle for emergency exits as per EN 179: 2002-06

### 50040 · 1 · 2 · 3 · 4 · 5 · 6

1 1021_Ausführung	2 Guide	3 1020_Vierkant	4 1022_Stiftlänge	5 1312_Material Vierkant	6 Surface
00 Lochteil	0 glide	80 8 mm	00 00	0 ohne Vierkant	00 Stainless steel matt
10 Stifteil	1 twin	85 8,5 mm	06 84 mm	1 Stahl verzinkt	11 Stainless steel polished
50 Paar		90 9 mm	12 109 mm	2 Edelstahl	44 Antibacterial
			99 Auf Anfrage		51 RAL 9005 black matt
					99 On request