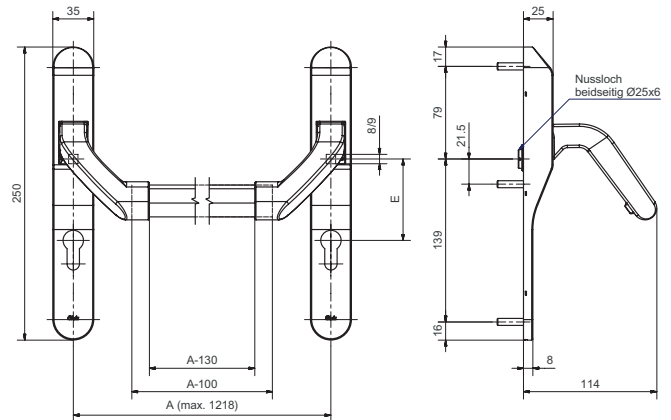


8615

Panic exit devices EN 1125



Product profile

For commercial and public buildings where the doors are equipped with an antipanic lockcase. By pressing the bar, the antipanic lockcase is operated and the room can be evacuated.

Standard version

Execution without square spindle
 Satin stainless steel
 Flat-oval pipe
 Length: 1218 mm
 Profile: 30 / 15 mm
 Follower: 9 mm
 Case of mechanism fixed on base plate
 Clip cover 250 x 35 x 25 mm

Cutout

8615.00 blind
 8615.2 RZ
 8615.3 PZ