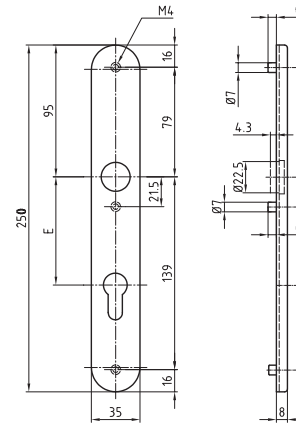


5364C

Stainless steel metal frame clip on long plate



Standard version

Length: 250 mm

Width: 35 mm

Projection: 8 mm

Satin stainless steel

16 mm guide: Glutz glide inwards

Base plate on one side with guided cam CN

Base plate on one side with threaded cam M4 CG

Options

Polished stainless steel

RAL lacquered

PVD lacquered

16 mm twin, semi-outside

16 mm twin, outside

Glutz easyfix

Knob fixing

Cutout

5364.0C blank

5364.1C BB standard keyhole

5364.2C RZ round cylinder

5364.3C PZ Profile: cylinder

5364.8C PRZ

5364.9C OVZ oval cylinder

Cutouts for lever handles:

.19 for lever handles Ø 18 mm

.21 for lever handles Ø 20 mm

.23 for lever handles Ø 22 mm