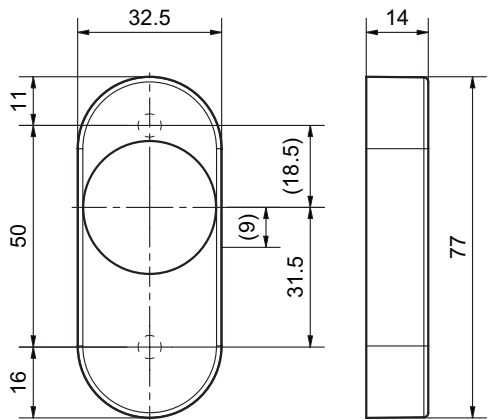


5317

Stainless steel metal frame push-on escutcheon



Standard version

- Length: 77 mm
- Width: 32,5 mm
- Projection: 14 mm
- Satin stainless steel
- Fixing centres 50 mm
- Projection: of cylinder 12 - 18 mm

Options

- Polished stainless steel
- RAL lacquered
- PVD lacquered

Cutout

5317.2 RZ-ZA

5317 • 1 • 2 • 3

1 Execution	2 1246_Lochung Schutz- beschläge	3 Surface
6 Stück	20 RZ-ZA	00 Stainless steel matt 11 Stainless steel polished 22 PVD brass polished 33 PVD brass matt 44 Antibacterial 51 RAL 9005 black matt 74 PVD Anthrazit 99 On request