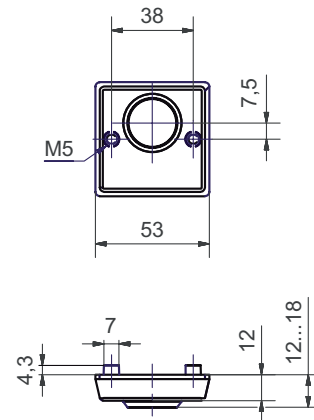
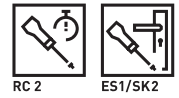


6177.2S-RS/6177.2C

Stainless steel cylinder protection rose ES 1



Product profile

For burglar resistant doors RC 1+2 according to EN 1627 - 1630: 2011

Standard version

Outside rose 6177.2S-RS:
 Solid satin stainless steel
 53 x 53 mm, rectangular
 Projection: 12 mm
 With threaded cam M5
 Inside rose to clip 6177.2C:
 Satin stainless steel
 53 x 53 mm
 Projection: 8 mm
 With guided cam M5
 Fixing centres 38 mm

Options

Polished stainless steel
 RAL lacquered
 PVD lacquered
 Round cylinder protection roses stainless steel
 5330/1: cylinder Projection: 7 - 12 mm
 5330/2: cylinder Projection: 12 - 15 mm
 5330/3: cylinder Projection: 15 - 18 mm
 5330/4: cylinder Projection: 18 - 21 mm

Standards

Resistance class 2, EN 1906: 2010-09