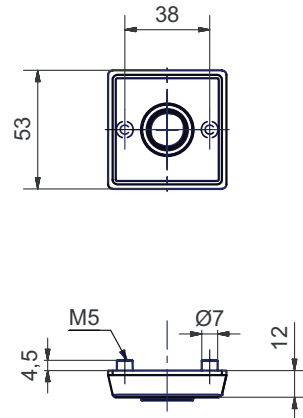


6178S/6178C

Stainless steel rose 12 mm



Standard version

Outside rose 6178S:
Solid satin stainless steel
53 x 53 mm, rectangular
Projection: 12 mm
With threaded cams M5
16 mm guide: Glutz glide inwards
Inside rose to clip 6178C:
Satin stainless steel
53 x 53 mm
Projection: 8 mm
With guided cam M5
Fixing centres 38 mm

Options

Polished stainless steel
RAL lacquered
PVD lacquered

16 mm twin, semi-outside
Glutz easyfix
Knob fixing