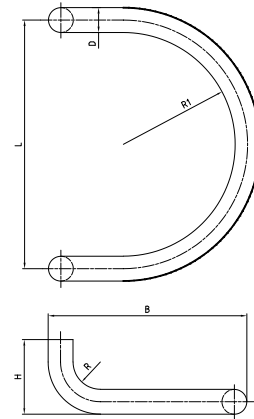


5780/5781

Stainless steel pull handles



Standard version

Satin stainless steel

D = Pull handle Ø 25, 31 mm

L = Fixing centre

Ø 25: 250, 300, 350, 400 mm

Ø 31: 300, 350, 400 mm

H = Projection

Ø 25 mm = 75 mm

Ø 31 mm = 80 mm

R = Radius 40 mm

Options

Polished stainless steel

Other fixing centres on request

Other diameters on request

Fixing types

- Single fixing
- Single fixing 5385C
- Single fixing 5791
- Fixing in pairs 5790
- Single fixing 5794S
- Stainless steel washer 5794A

Please specify the desired fixing type when placing the order.

(For a description, see the assembly instructions)

5780/5781 · ① · ② · ③ · ④

① 1323_Ausführung	② 1324_Durchmesser	③ 1325_Achsmass	④ Surface
0 Innengewinde	25 25 mm	25 250 mm	00 Stainless steel matt
1 Inbus	31 31 mm	30 300 mm	11 Stainless steel polished
2 Paar		35 350 mm	44 Antibacterial
		40 400 mm	51 RAL 9005 black matt
			99 On request