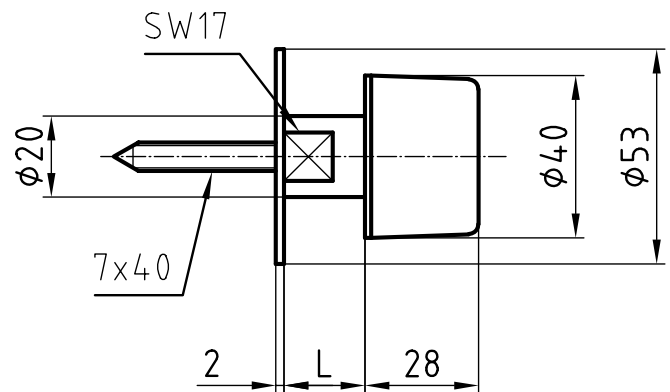
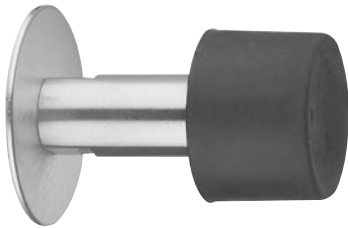


5945A

Stainless steel door stop



Standard version

Door stop Ø 40 / 53 mm

Base plate in stainless steel, 53 x 2 mm

Rubber buffer black 40 x 28 mm

Wall fixing

Tube nickel plated, L = 20 mm

Concealed fixing

Threaded screw 7 x 40 mm

Options

Tube nickel plated, L = 40 mm

Tube nickel plated, L = 60 mm