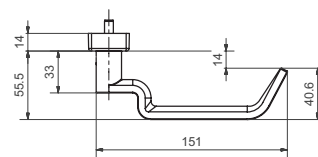
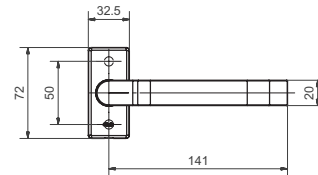


50057 Assoluto

Stainless steel metal frame lever handle



Standard version

Lever handle Length: 151 mm, Ø 20 mm
 Projection: 56+14 mm
 Female part 9 mm
 Satin stainless steel
 16 mm guide for Glutz glide
 Including rectangular rose spring assisted

Standards

Category of use class 4, EN 1906: 2012-05
 Tested for use in fire-rated and smoke protection doors to
 DIN 18273: 1997 - 12
 Admitted, combined with the appropriate lock as lever handle for
 emergency exits as per EN 179: 2002-06

Options

Polished stainless steel
 RAL lacquered
 PVD lacquered
 Appl. class 3: square spindle 8 mm galvanised, EN 1906: 2012-05
 Appl. class 4: square spindle 8 mm stainless steel, EN 1906: 2012-05

50057 · ① · ② · ③ · ④ · ⑤ · ⑥

① Execution	② Guide	③ Spindle	④ Bolt length	⑤ Spindle material	⑥ Surface
00 Lochteil	0 drehbarfest	80 8 mm 90 9 mm	00 Without	0 Without	00 Stainless steel matt 99 On request