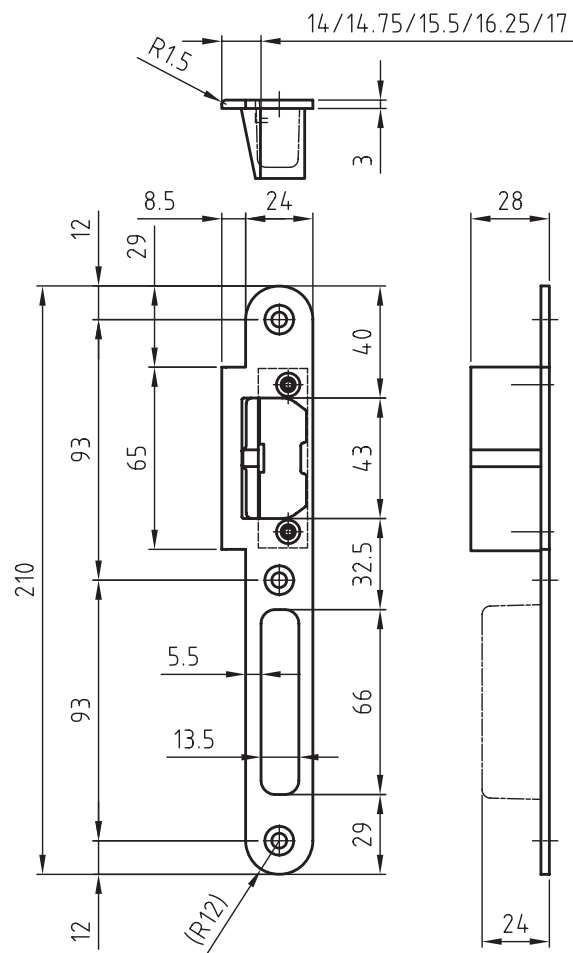


Strike plate with lip - for use with compact electric strikes



Strike plate with lip (latch guide) can be combined with electric door openers for flush doors on timber frames. The tried-and-tested latch guide ensures that doors are easy to open and close.

Satin stainless steel
210 x 24 x 3 mm
Radius 1.5 mm
Rib 14-17 mm
Left / right indication necessary

Black plastic push-fit box for covering latch and deadbolt mortises
Attention: Order electric strike with latch guide!