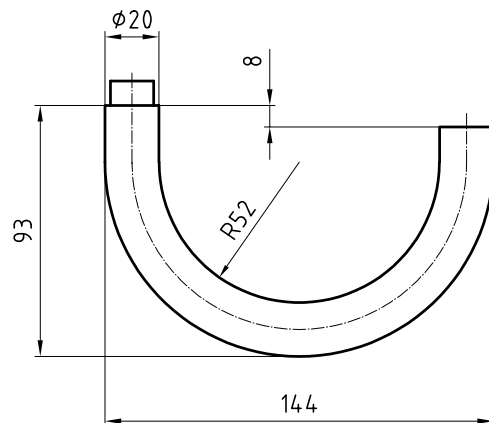


5046 Paris

Stainless steel lever handle



Picture shows handle with 5620C rose



Product profile

Commercial buildings, administrative centres, schools, residential homes

Standard version

Lever handle Length: 144 mm, Ø 20 mm

Projection: 93 mm

Square spindle 8 mm

Satin stainless steel

16 mm guide for Glutz glide / easyfix

Options

Polished stainless steel

RAL lacquered

PVD lacquered

Square spindle 8,5 mm or 9 mm

With ball end

16 mm guide for Glutz twin glide

Category of use class 4, EN 1906: 2002-05

Standards

Category of use class 3, EN 1906: 2002-05

Tested for use in fire-rated and smoke protection doors to DIN 18273: 1997 - 12

Admitted, combined with the appropriate lock as lever handle for emergency exits as per EN 179: 2002-06 in combination with plates or roses of maximum 7 mm height