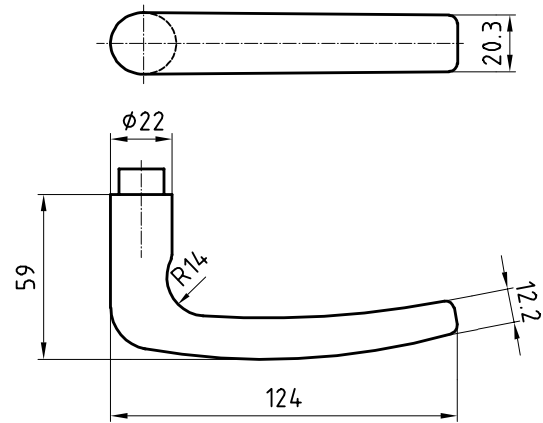


5060 Zug

Stainless steel lever handle



Picture shows handle with 5620C rose

Product profile

Commercial buildings, administrative centres and superior quality residential developments

Standard version

Satin stainless steel surface
Lever handle length 124 mm, Ø 22 mm
Projection 59 mm
Prepared for fixed mobile mounting with easyfix
Steel galvanised square spindle
16-mm Glutz glide bearing, tested for 2.5 million cycles

Options

16-mm twin bearing with easyfix (fixed mobile)

Important note

To achieve usage class 4 in accordance with EN 1906, a 9-mm steel or 8-mm stainless steel square spindle is needed

5060 • 1 • 2 • 3 • 4 • 5 • 6

| 1 Execution | 2 Guide | 3 Square | 4 Bolt length | 5 Square material | 6 Surface |
|-------------|--------------|-----------|----------------|--------------------|-----------------------------|
| 00 Lochteil | 0 glide | 80 8 mm | 00 Without | 0 Without | 00 Stainless steel matt |
| 10 Stifteil | 1 twin glide | 85 8,5 mm | 06 84 mm | 1 Galvanized steel | 11 Stainless steel polished |
| 50 Paar | | 90 9 mm | 12 109 mm | 2 Stainless steel | 44 Antibacterial |
| | | | 99 Auf Anfrage | | 51 RAL 9005 black matt |
| | | | | | 99 On request |