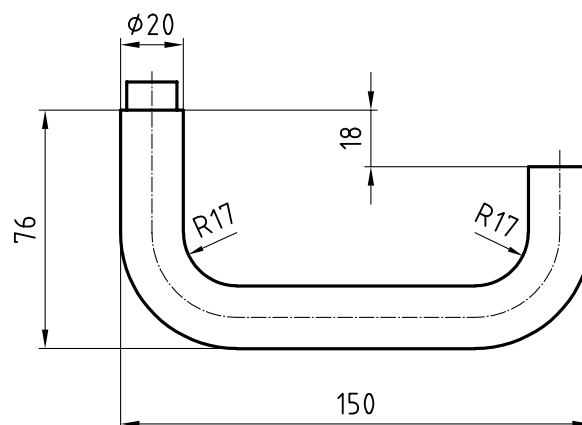


## 5065 Rena

### Stainless steel lever handle



Picture shows handle with 5620C rose

#### Product profile

Hospitals, commercial buildings, administrative centres

#### Standard version

Satin stainless steel surface

Lever handle length 150 mm, Ø 20 mm

Projection 76 mm

Prepared for fixed mobile mounting with easyfix

Steel galvanised square spindle

16-mm Glutz glide bearing, tested for 2.5 million cycles

#### Options

16-mm twin bearing with easyfix (fixed mobile)

#### Standards

Category of use class 3, EN 1906: 2002-05

Tested for use in fire-rated and smoke protection doors to  
DIN 18273: 1997 - 12

Admitted, combined with the appropriate lock as lever handle for  
emergency exits as per EN 179: 2002-06

#### Important note

To achieve usage class 4 in accordance with EN 1906, a 9-mm steel or  
8-mm stainless steel square spindle is needed

Approved with corresponding panic lock as emergency exit lever  
handle in accordance with EN 179

#### 5065 • 1 • 2 • 3 • 4 • 5 • 6

| 1 Execution | 2 Guide      | 3 Square  | 4 Bolt length  | 5 Square material  | 6 Surface                   |
|-------------|--------------|-----------|----------------|--------------------|-----------------------------|
| 00 Lochteil | 0 glide      | 80 8 mm   | 00 Without     | 0 Without          | 00 Stainless steel matt     |
| 10 Stifteil | 1 twin glide | 85 8,5 mm | 06 84 mm       | 1 Galvanized steel | 11 Stainless steel polished |
| 50 Paar     |              | 90 9 mm   | 12 109 mm      | 2 Stainless steel  | 44 Antibacterial            |
|             |              |           | 99 Auf Anfrage |                    | 51 RAL 9005 black matt      |
|             |              |           |                |                    | 99 On request               |