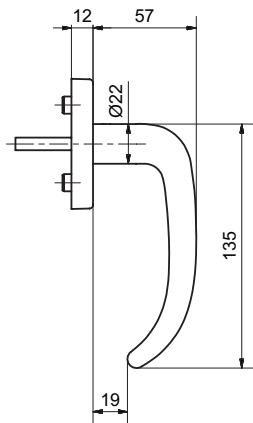
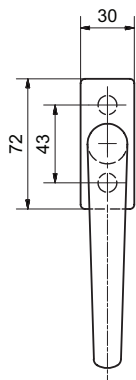


## 50013/51002 CF

Stainless steel window handle



### Product profile

Commercial buildings, administrative centres and superior quality residential developments

### Standard version

Satin stainless steel surface, Ø 22 mm  
Handle length 135 mm  
Handle projection 57 mm  
Total projection 69 mm  
4 x 90° ball stop  
Square spindle 7 x 38 mm  
Fixing centres 43 mm  
Studs Ø 9.5/12 mm

Clip-on rose 51002 CF  
72 x 29 x 12 mm

### Important note

Fixed mobile mounting on rose, concealed screws  
M5 screws must be ordered separately

### 50013/51002 CF · ① · ②

① Bolt length	② Surface
24 24mm	00 Stainless steel matt
26 26mm	11 Stainless steel polished
32 32mm	44 Antibacterial
35 35mm	51 RAL 9005 black matt
38 38 mm	99 On request
40 40mm	