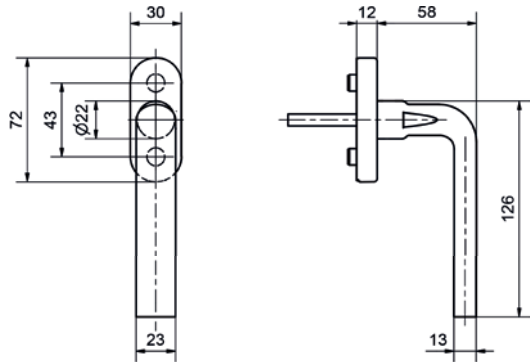


50014/51001 CF

Stainless steel window handle



50014/51001CF

Product profile

Commercial buildings, administrative centres and superior quality residential developments

Standard version

- Satin stainless steel surface, Ø 22 mm
- Handle length 126 mm
- Handle projection 58 mm
- Total projection 70 mm
- 4 x 90° ball stop
- Square spindle 7 x 38 mm
- Fixing centres 43 mm
- Studs Ø 9.5/12 mm

Clip-on rose 51001 CF
72 x 29 x 12 mm

Important note

Fixed mobile mounting on rose, concealed screws
M5 screws must be ordered separately

50014/51001 CF · ① · ②

① Bolt length	② Surface
24 24mm	00 Stainless steel matt
26 26mm	11 Stainless steel polished
32 32mm	44 Antibacterial
35 35mm	51 RAL 9005 black matt
38 38 mm	99 On request
40 40mm	