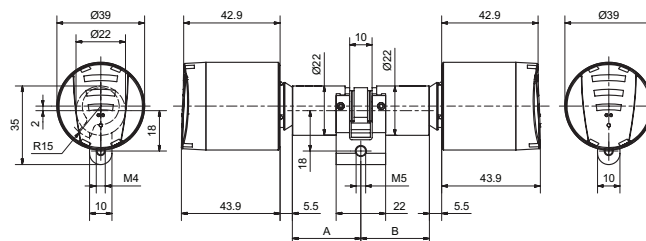


83204 E double-knob cylinder

EE / RZ



Product profile

Battery-operated electronic cylinder for interior and exterior doors. Opening and closing from outside and inside take place with contact reading of the medium, such as a key tag or chip card, and then the turning of the knob.

- E-knobs for E-cylinder, including batteries
- E-Modules

Standard version

- Exterior E-knob with access control function and battery
- Interior E-knob with access control function and battery
- Identification via RFID Mifare DESfire EV1 (ISO 14443A)
- Programming via media or wireless access (868 MHz)
- Protection class: IP65, EN 15684 (in preparation)
- Security: Predetermined breaking point on the outside knob, anti-drilling protection, core extraction protection, 3DES encryption

Scope of supply

83204 · ① · ② · ③ · ④ · ⑤ · ⑥ · ⑦ · ⑧

① Version	② Length A (Outside)	③ Length B (inside)	④ Surface Outside ⑤ Surface inside	⑥ Security	⑦ Knob type	⑧ Reading system
S Standard	31,0 mm (Base length)	31,0 mm (Base length)	0 Nickel plated	0 Standard	1 Glutz knob	0 Mifare
M Pinion 10	36,0 mm (+05 mm)	36,0 mm (+05 mm)	1 Nickel polished			
I Biffar	41,0 mm (+10 mm)	41,0 mm (+10 mm)	2 Brass polished			
Q Pinion 18	46,0 mm (+15 mm)	46,0 mm (+15 mm)				
	51,0 mm (+20 mm)	51,0 mm (+20 mm)				
	56,0 mm (+25 mm)	56,0 mm (+25 mm)				
	61,0 mm (+30 mm)	61,0 mm (+30 mm)				
	66,0 mm (+35 mm)	66,0 mm (+35 mm)				
	71,0 mm (+40 mm)	71,0 mm (+40 mm)				
	76,0 mm (+45 mm)	76,0 mm (+45 mm)				
	81,0 mm (+50 mm)	81,0 mm (+50 mm)				
	86,0 mm (+55 mm)	86,0 mm (+55 mm)				
	91,0 mm (+60 mm)	91,0 mm (+60 mm)				